



LYNX

Cage & Rack Washers

Model 410RS

Ensuring efficient cleaning for all your animal care items

The LYNX Model 410RS (formerly Scientek SW6100/SW6200/SW6300) Cage and Rack Washers are heavy duty, large capacity reliable hydro-spray washers designed for ease of use, minimal maintenance, and highest cleanability of caging, bottles, racks, debris pans, and other items used in the care of laboratory animals. These washers deliver high performance within a simplistic design. The system is provided with greater flexibility to meet today's "green" initiatives and high throughput demands. LYNX standardizes on non-proprietary parts on all equipment. Pit mounting is standard.

Standard Features

- Heavy-duty Hinge Door
- Modular Construction
- Knock-down Shipment
- **Rotating** Spray Delivery System
- Personnel Safety Features
- PLC Control System with Full Color HMI Touch Screen
- 10 Configurable Cycles
- Automatic Self-cleaning Screen
- Temperature Guarantee
- Insulated Construction
- Incoming Utility Gauges
- Interior Illumination
- SS Recirculation Piping and Components
- Non-proprietary Parts

Construction

LYNX 410RS Cage and Rack Washers are provided with a heavy-duty stainless steel door with port view glass window. Recirculated water is heated by a stainless steel steam coil to achieve guaranteed treatment temperatures. A color touch screen control panel provides a user-friendly interface for selecting, programming, and monitoring cycles. Unit is provided with a stainless steel 10 HP treatment pump with a direct read pump pressure gauge.

Optional Features

- **Shallow Base Unit** (6")
- Pit or Floor Mounted
- Pass-thru Unit
- Right or Left Hand Services
- Re-usable Throwaway Alkaline Tank
- House Hot Water Heat Exchanger
- Integral Data Collection System
- Drain Discharge Cooling
- Automatic Damper
- SS Exhaust Fan
- Low Steam Pressure Package
- Pass-thru Door Interlock System
- Air Compressor
- Printer
- Seismic Tie Down
- Detergent Dispensing Systems
- pH Neutralization System
- Feeder Bottle Washing System
- Automatic Water Rack Flush System
- Split Base for Special Entry
- Utility Enclosure Panels
- Inclined Floor Grating
- Barrier Wall Flange(s)

Accessories

- Floor Ramps
- Bottle Wash Cart
- Universal Cage Wash Cart
- High Capacity Cage Wash System

Utilities

Electrical (E)	3-60-208/480/600V, 12HP
Hot Water (HW)	1" NPT, 35 PSI, 25 GPM @ 140° F ± 5° F (65 gallon sump capacity)
Cold Water (CW)*	1" NPT, 35 PSI, 25 GPM @ 50° F ± 5° F
Steam (S)	1½" NPT, 40-60 PSI, Dynamic ± 5 PSI, 450-600 #/Hr Flow Rate
Condensate (C)	¾" NPT
Air (A)	¼" NPT, 80-100 PSI, 1-2 CFM Flow Rate
Drain (D)	12" x 12" Floor Sink with 4" Floor Drain (<i>minimum</i>), 180 GPM Flow Rate
Vent (V)	8" x 13" Duct, Saturated Vapor @ 190° F, 1 DC (1200 CFM) + 1 IDC (500 CFM)

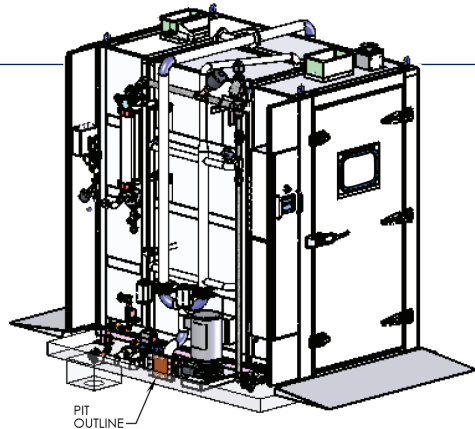
*CW - Required if drain discharge cool-down package ordered

Model	Standard Chamber Size W x H x D	Standard Unit Size W x H x D	Opt. Door Widths	Opt. Door Heights	Opt. Chamber Lengths
410RS ¹	48" x 88" x 96"	88" x 95" x 98"-116"	36", 42", 46"	74", 82"	90", 100", 108"

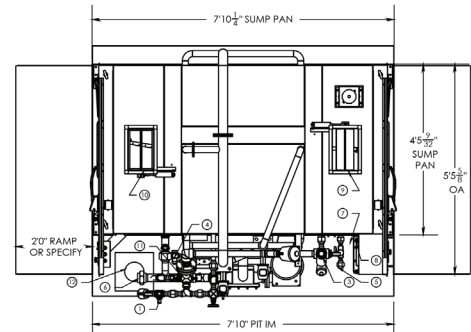
Washers can be designed to any size to meet your application requirements. Certain options can increase unit sizes.

1) 410RS (formerly Scientek SW6100/SW6200/SW6300)

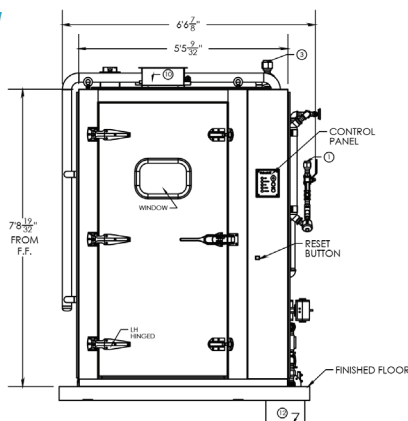
Representative Drawing



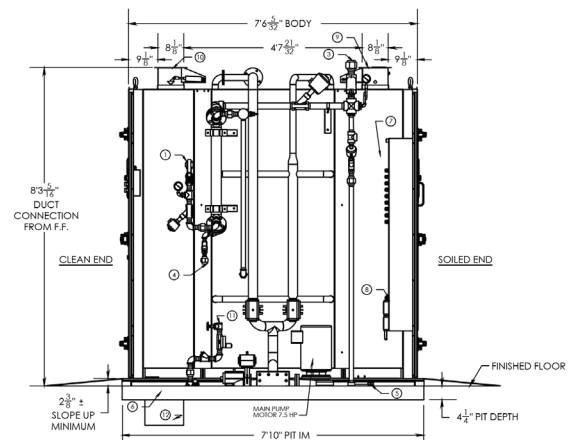
Top View



Front View



Side View



410RS Cage and Rack Washer Sell Sheet_M1040_1.00 2021-0318