

SCIENTEK

Indexing Tow Through Washer

Automated Cart & Utensil Washer Series

Meeting the Needs of Healthcare Facilities

SCIENTEK Indexing Tow Throughs are heavy duty, large capacity reliable hydro-spray washer-dryers designed for ease of use, minimal maintenance, and highest cleanability. These automated cart and utensil washers are designed for cleaning and drying surgical cases, general purpose carts, dietary carts, racked utensils, and utility items used in healthcare facilities. These pit mounted washers deliver high performance within a simplistic design. The system is provided with greater flexibility to meet today's "green" initiatives and high throughput demands. SCIENTEK standardizes on non-proprietary parts on all equipment.

Standard Features

- Sliding Door
- Modular Construction
- Knock-down Shipment
- **Oscillating** Spray Delivery System
- Detergent Dispensing Systems
- Personnel Safety Features
- PLC Control System with Full Color HMI Touch Screen with Modem Package
- 10 Configurable Cycles
- Automatic Four-phase Treatment Cycle
- Automatic Self-cleaning Screen
- Automatic Water Level Control
- Temperature Guarantee
- Insulated Construction
- Incoming Utility Gauges
- Interior Illumination
- SS Recirculation Piping and Components
- House Hot Water Heat Exchanger
- Drain Discharge Cooling
- Recirculated Hot Air Drying System
- Non-proprietary Parts

Construction

SCIENTEK Indexing Tow Through Washers are provided with heavy-duty stainless steel doors with port view glass windows. Recirculated water is heated by a stainless steel steam coil to achieve guaranteed treatment temperatures. A color touch screen control panel provides a user-friendly interface for selecting, programming, and monitoring cycles. Units are provided with stainless steel treatment pumps.

Optional Features

- Floor Spray Header
- Right or Left Hand Services
- Chemical Level Monitoring System
- Integral Data Collection System
- Automatic Damper
- Low Steam Pressure Package
- Air Compressor
- High Altitude Treatment
- Printer
- Seismic Tie Down
- Remote Mounted Control Column
- pH Neutralization System
- Split Base for Special Entry
- Utility Enclosure Panels
- Automatic Inclined Floor Grating
- Barrier Wall Flange(s)

Accessories

- Modular Walls
- Integrated Case Carts

Utilities

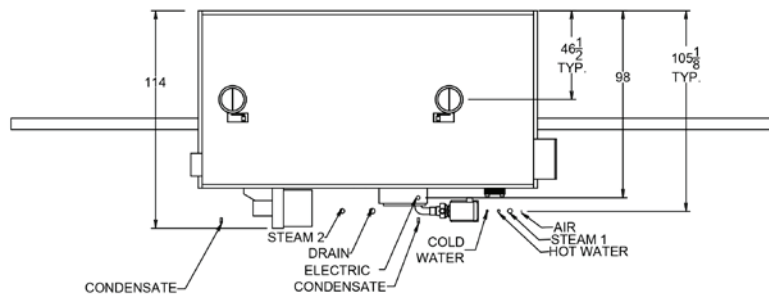
Electrical (E)	3-60-208/480V, 25HP
Hot Water (HW)	1½" NPT, 35 PSI, 50 GPM @ 120° F ± 5° F
Steam (S1)	2½" NPT, 35-80 PSI, Dynamic ± 5 PSI, 1000 #/Hr (<i>washer</i>)
Steam (S2)	2½" NPT, 35-80 PSI, Dynamic ± 5 PSI, 1400 #/Hr (<i>Dryer</i>)
Condensate (C)	1" NPT, 2 Connections
Air (A)	½" NPT, 100 PSI, 6 CFM Flow Rate
Drain (D)	12" x 12" Floor Sink with 4" Floor Drain (<i>minimum</i>), 120 GPM Flow Rate
Vent (V1)	12" ID Duct (<i>washer</i>), 700 CFM, Saturated Vapor @ 190° F
Vent (V2)	12" ID Duct (<i>dryer</i>), 700 CFM, Saturated Vapor @ 190° F

Model	Standard Chamber Size	Standard Unit Size
480LX	40" W x 85" H x 170" D 1016 mm W x 2159 mm H x 4318 mm D	101" W x 121" H x 205" D 2565 mm W x 3073 mm H x 5207 mm D
486LX	46" W x 85" H x 170" D 1168 mm W x 2159 mm H x 4318 mm D	107" W x 121" H x 205" D 2718 mm W x 3073 mm H x 5207 mm D

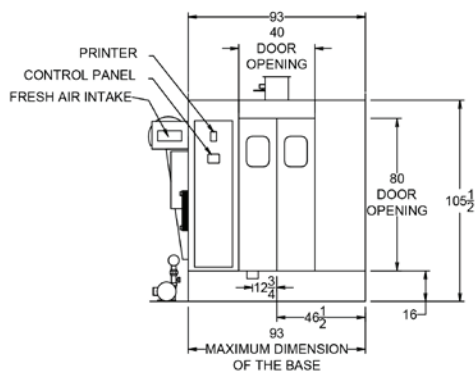
Representative Drawings*

*480LX shown below, SCIENTEK will provide other model, mechanical service and installation drawings on request.

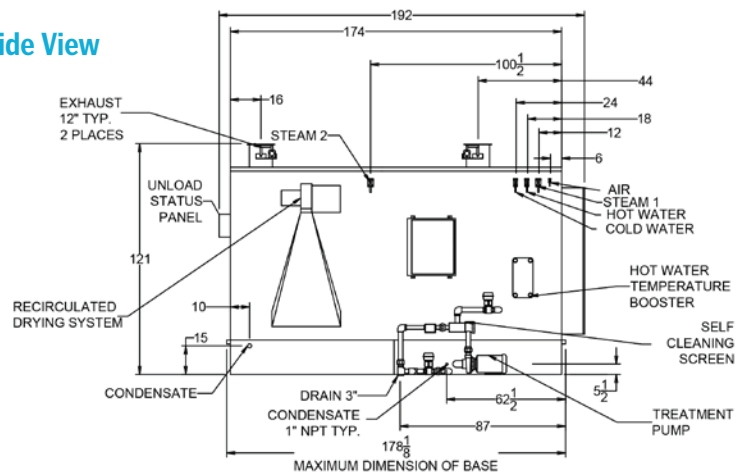
Top View



Front View



Side View



SCIENTEK does not recommend nor imply in any way that SCIENTEK cart and utensil washers be used for the terminal decontamination of any regulated medical device. For processing of a specific material or products, follow the manufacturers recommended cleaning techniques and processes.

Automated Cart and Utensil Washer Series Sell Sheet_M1088_1.00 2021-1209